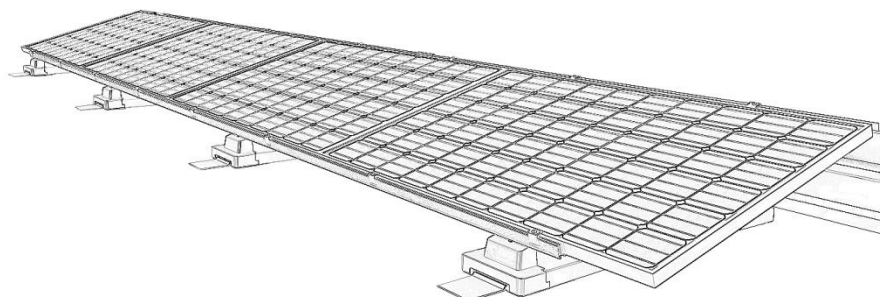


Technical Data Sheet

MS CENIQ smart



General information:

System:	Aerodynamic lightweight PV racking system for flat roofs without roof penetration
Attachment:	Welded fixing flaps; additional ballasting for high wind loads
Applications:	Flat-roof commercial, industry and residential buildings
Roof covering:	Weldable polymeric roofing membranes, bitumen
System guarantee:	10 years

System characteristics:

Alignment:	South for one row, or east-west for two rows
Roof pitch:	Max. 5° *
Module inclination:	15° (to roof)
Module orientation:	Horizontal (landscape)
Distributed dead load including modules:	South alignment: approx. 9 kg/m ² East-west alignment: approx. 12 kg/m ² depending on module weight and chosen row spacing
Material:	Mounting rack: PP recycle Mounting rail and module clamp: aluminium EN AW6060 T66 Screws, nuts: stainless steel (A2) Wind deflector: steel with Zn Al _{3,5} Mg ₃ coating (Magnelis®) Wind deflector cap: aluminium AlMg ₃

Module compatibility:

Framed PV module, two sizes:

1. Frame height: 31-40mm*
 Width: 973 mm - 1013 mm
 Length: 1650 mm - 1800 mm
 Typical for crystalline module with 60 cells of 6" ; 156mm
2. Frame height: 35mm
 Width: 1020 mm - 1058 mm
 Length: 1650 mm – 1800 mm
 Typical for crystalline module with 60 cells of 166mm (M6)

Module substructures:

Flexible with 1 - 4 modules per substructure with south orientation and 2 – 8 modules per substructure with east-west orientation

Dimensions correspond to module dimensions plus 10mm distance between modules

Distance between module tables: lateral min. 20mm / row distance flexible

Attachment:

- Membrane roofs: Flaps 140 x 220mm, made from identical roofing membrane supplied and cut to size by customer, welded with roof covering
- Bitumen roofs: Flaps 140 x 240mm, made from EPDM supplied and cut to size by customer, welded with roof covering
- For high wind loads: Ballasting possible with concrete paving stones approx. 200/100/80mm
- Structural design: Flexible, by adjusting number of mounting racks
- Service: Mounting and ballasting plan from Centroplan

* By means of additional measures carried out on site, it is possible to use PV modules with max. 50mm frame height and to install on roofs with max. 10° pitch. Centroplan is happy to advise on this.

Centroplan GmbH
 Am Pannhaus 2-10
 D-52511 Geilenkirchen
 Germany
 Tel. +49 (0)2451 911 30 – 0
 Fax +49 (0)2451 911 30 – 15
www.centroplan.de
sales@centroplan.de